

ICE150

160 kg Modular Cube



Other models in this range: ICE220 - ICE200 - ICE300 - ICE500

Technical Features

- High efficiency vertical evaporator cuber
- Stainless Steel finishing
- Built in cleaning system
- Low power and water consumption
- Self diagnostic system with led indicators
- Easy removable condenser filter
- Front evaporator access: immediate access to the evaporating plate for quick self-maintenance operations
- Head only ice maker: requires a separate storage bin to collect the ice produced.

24 Hour Ice Production - 10°/10° C

Air Cooled 160 kg

Water Cooled 140 kg

Compatible Bins

RB100

RB150

ICE DISPENSER BIN DB59

Voltage

220/50/1 standard version

220/60/1 version available on demand

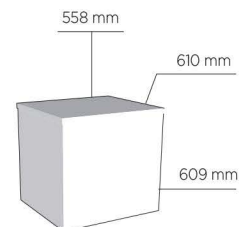
Technology and Certifications



Certified ISO 9001



Full Cube - 12 G
(26,5 x 26,5 x 26 mm)



Factory 12 Sandown Square
12 Smith Rd Springvale Vic 3171

(03) 9562 4400

www.frostline.com.au



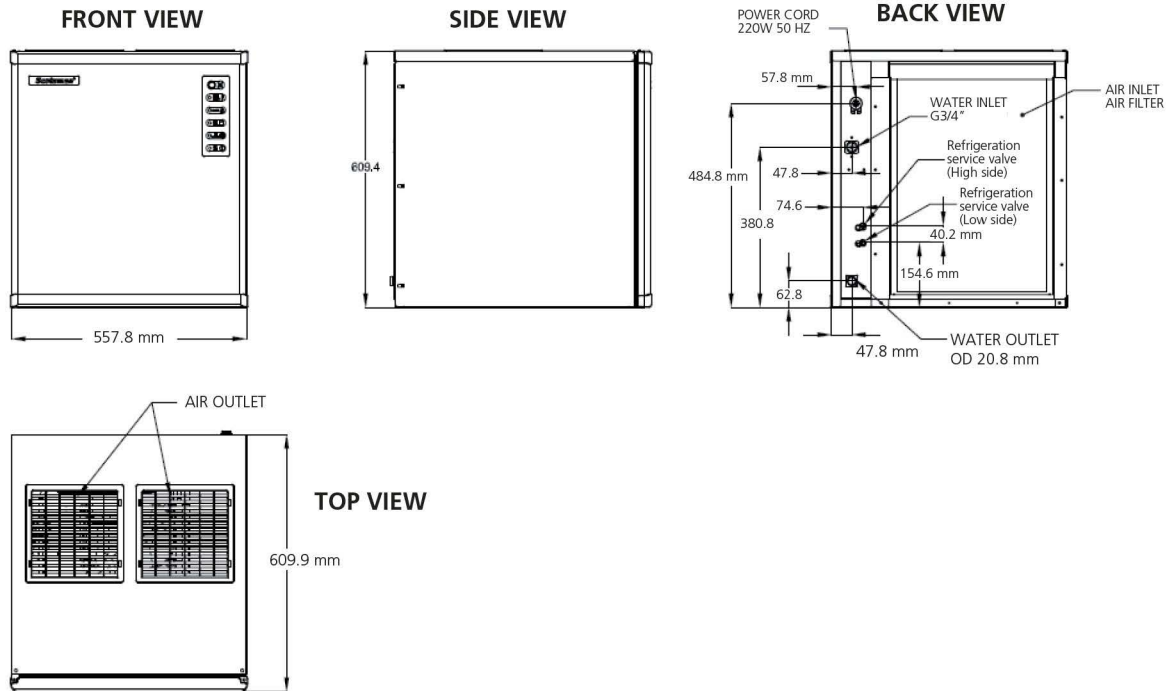
ICE150

160 kg Modular Cube

FROST
LINE



Other models in this range: ICE220 - ICE200 - ICE300 - ICE500



Operating Limits

	Minimum	Maximum
Air Temperatures	10°C	40°C
Water Temperatures	5°C	35°C
Electrical Voltage	-10%	+10%
Water Pressure	14 psi 1 bar	70 psi 5 bar

Specifications and design are subject to change without notice

	Voltage	Power Input Watt (*)	Refrigerant	Fuse Amp	Energy consumption (kwh/100kg)	Water Consumption (l/100kg)	Net Weight kg	Shipping Weight kg
SVD 152 AS	220/50/1	800	R404A	10	15,9	147	55	70
SVD 152 WS	220/50/1	700	R404A	10	11,8	2152	53	67
SVDH 152 AS	220/50/1	800	R404A	10	15,9	147	55	70
SVDH 152 WS	220/50/1	700	R404A	10	11,8	2152	53	67

(*) Power Input: at 43°C Ambient Temperature

(**) Water Consumption: at 32°C Air and 21°C Water